

CONTAINER HOUSE & OFFICE





/01

Production Equipment

1.1 EQUIPMENT & PRODUCTION



**ROOFING
TILE
PRODUCTION
EQUIPMENT**

1.2 EQUIPMENT & PRODUCTION



**C-SHAPED
STEEL
MAKING
MACHINE**

1.3 EQUIPMENT & PRODUCTION



**Large
Shearing
Machine**

1.4 EQUIPMENT & PRODUCTION



**PAINTING
&
COATING
AREA**

2.1 EQUIPMENT & PRODUCTION

The factory is equipped with over 30 precision equipment, including a color steel tile production line, a painting and coating line, a large-scale steel plate bending machine, a C-shaped steel forming machine, a special-shaped pipe forming machine, and a shearing machine. With high-quality raw materials, a mature technical system, and comprehensive design solutions, we pay attention to every detail to ensure the quality and excellence of each product.





/02

Product Introduction of Container Houses

2.1 FOLDABLE CONTAINER HOUSE PRODUCTION INTRODUCTION

foldable container house is constructed with a lightweight steel frame and sandwich panels as the enclosure material. The base and walls are connected using high-strength galvanized hinges. Its features include ready-to-live-in upon unfolding, repeated folding without deformation, quick installation, space-saving, and convenient transportation. It is a new concept of environmentally friendly integrated modular housing widely promoted for temporary construction projects.



2.2 FOLDABLE CONTAINER - SPECIFICATIONS



Folding container size: 6000mm*3010mm*2590mm

Height: 450mm (folded height)

Weight: 1265KG

Frame: 2.0mm C-shaped steel, 1.5mm convex pipe

Roof: 0.3mm color steel plate/50mm/double white-gray

Wall: Glass wool color steel sandwich panel

0.25mm/double-sided reinforcement

Doors and Windows: Aluminum alloy with guardrail

/steel door

Electrical: 6-position distribution box, 32A/16A sockets,

15W LED lights, five-hole switches

2.3 FIXED CONTAINER HOUSE PRODUCT INTRODUCTION



With its advantages of green and environmental friendliness, convenient construction, earthquake and wind resistance, thermal insulation, soundproofing, and cost-effectiveness, fixed container houses have quickly made a name for themselves in the construction industry.



2.4 FIXED CONTAINER HOUSE-SPECIFICATIONS



Dimensions: 6000mm×3000mm×2560mm

Frame: 1.8mm C-shaped steel

Roof: 0.3mm color steel sheet/50mm/

Double white-gray

Wall: Double-sided 0.23mm glass wool board

Doors and Windows: Aluminum alloy windows +
anti-theft screen windows/Steel door

Electrical: 6-position distribution box, 32A, 16A sockets,
15W LED lights, five-hole switch.



2.5 PACKAGED CONTAINER HOUSE - SPECIFICATIONS



Dimensions: 6055mm × 2990mm × 2896mm

Weight: 1350KG

Frame: 3.0mm thick galvanized main beam

Roof: 0.45mm galvanized color steel sheet/100mm
glass wool

Walls: 75mm thick color steel glass wool sandwich panel,
with 0.45mm thick color steel sheets on both sides

Doors and Windows: PVC+anti-theft net window/steel door

Electrical: 6-position distribution box, 32A and 16A sockets,
36W LED lights, five-hole switches



2.6 PREFAB PANEL HOUSE - SPECIFICATIONS



Roof Type: K-style (double slope, four slope, etc.)

Columns: 80*40 C-shaped steel

Exterior Wall: Double-sided color steel glass wool
sandwich panel

Floor: Plywood

Partition: Double-sided color steel glass wool
sandwich panel

Doors and Windows: Lever handle anti-theft door /
PVC sliding window

2.7 TOILET CONTAINER HOUSE - SPECIFICATIONS



Size: 1100mm × 1100mm × 2300mm

Framework: 0.2mm high-quality color steel plate
with 50mm foam insulation

Support column: 1.2mm aluminum alloy

Roof: Color steel sandwich panel

Base: 3x3 galvanized square tube

Configuration: Can be equipped with leakage switch,
exhaust fan, ceramic washbasin, ceramic
squat toilet, custom window, drainage pipe,
water inlet pipe



2.8 CONTAINER HOUSE GUARD BOOTH - SPECIFICATIONS



Dimensions: 1450mm × 1450mm × 2300mm

Frame: 80mm × 80mm and 80mm × 40mm stainless steel square tube

Inner Wall: 12cm single white board (fiberboard)

Roof: Galvanized pipe framework

Base: 15mm thick galvanized square tube

Doors and Windows: Stainless steel door and sliding windows (tempered glass)

Configuration: Can be equipped with sunshade film, LED ceiling lights, exhaust fan, and air conditioning socket.

2.9 APPLICATION SCENARIOS OF CONTAINER HOUSES



Construction
sites



Temporary
offices



Campgrounds



Scenic areas



Commercial
facilities



Sales offices



Restrooms



Shower rooms



Canteens



Medical
services



Guard booths



Settlement
houses



/03

Case showcase

3.1 K-STYLE MODULAR HOUSE CASE SHOWCASE





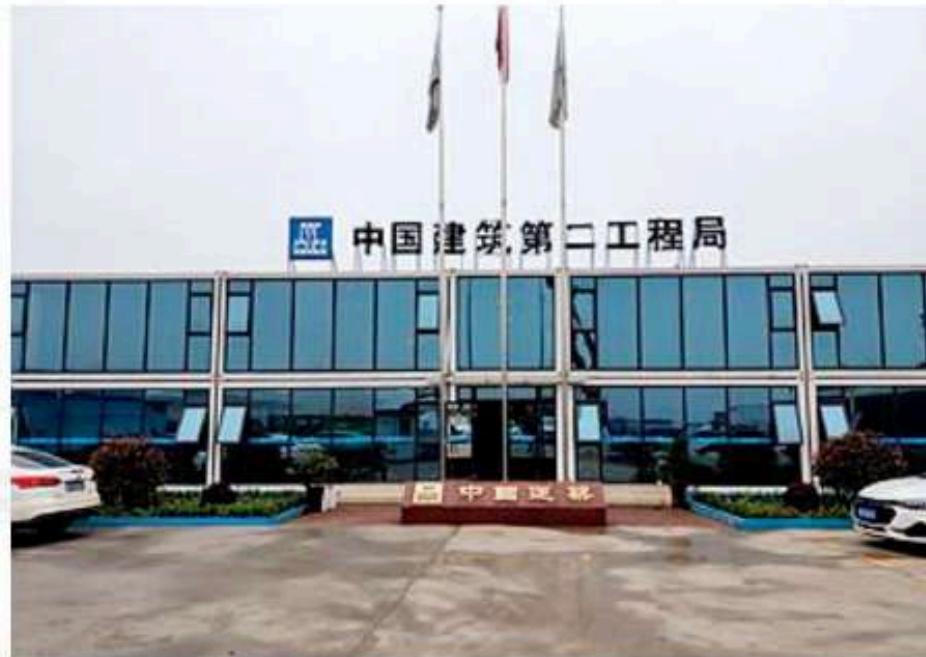
Macland Group
Limited

3.2 T-STYLE MODULAR HOUSE CASE SHOWCASE





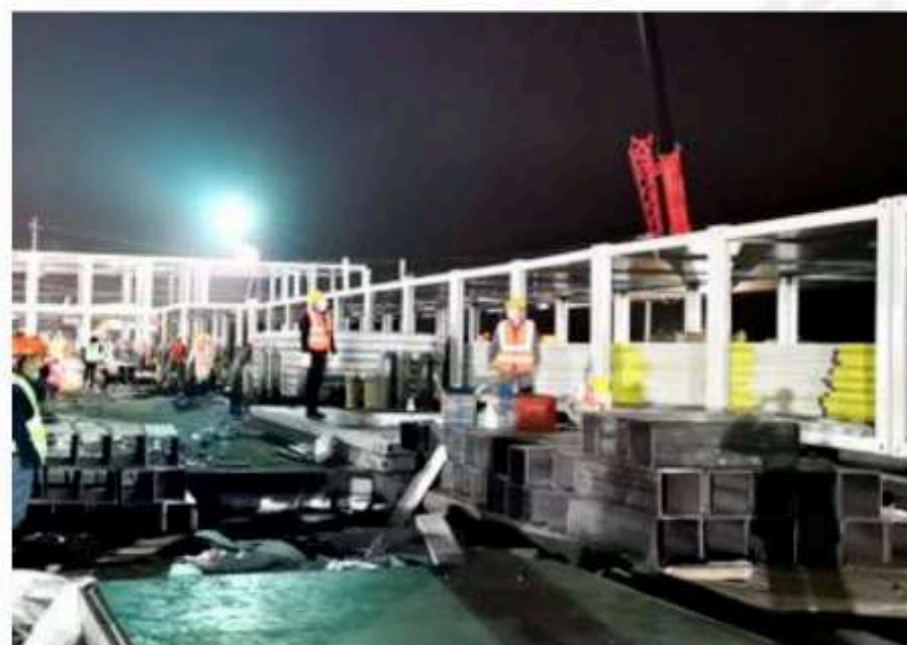
3.3 CONTAINERIZED HOUSE CASE SHOWCASE



3.4 FOLDABLE CONTAINER HOUSE CASE SHOWCASE



3.5 FIELD HOSPITAL CASE SHOWCASE



3.6 EXPORT CONTAINER HOUSE CASE STUDIES





Macland Group
Limited